

Summary

The Gettin' Home, LLC is a women's reentry home for women released from incarceration. Beginning the day of release, this program is designed to equip enrolled women with spiritual, emotional, physical, social, and financial tools.

If you enroll in this program, these tools will enable you to become successful productive thriving citizens upon reentry to your communities. The program includes a Christian home like campus. There you will attend classes and study programs tailored to your passions and needs. Gettin' Home provides skill training, an arts program, visitation with children and approved family members. In addition we provide transportation to appointments, required meetings and work outside the campus.

You may apply for this program by contacting your Chaplain or case worker. We encourage you to begin this process up to one year and not later than six months before release.

This is a one year Christ based program. If you are serious about being successful once leaving prison this program is for you.

Gettin' Home, LLC

PO Box 175
Helena, OK 73741
580-852-3356

 Gettin' Home, LLC

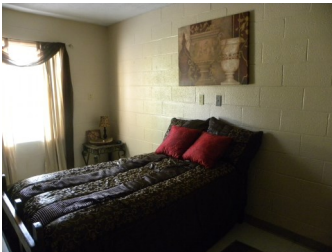


Where will I go when I get out?

Helping You Succeed in a Christ Based safe and loving home.



The Gettin' Home, LLC is a Christ based women's Campus for women leaving incarceration. This Campus exists so it may help women thrive in the communities to which they return after graduation. Every woman in Oklahoma has the right to be treated with dignity, compassion and care. Rather you are indigent or wealthy, we have a place for women who apply and are accepted into our program. The loving home-like atmosphere of the Gettin' Home provides shelter in the form of a common living and kitchen area, classrooms and private rooms decorated by persons and groups with you in mind. From the moment you leave the doors of incarceration you will be provided with transportation, clothing, food, shelter, and help to make your reentry as successful as possible.



The Gettin' Home is located in a Northwestern Oklahoma rural town setting of Helena, OK. The Campus is located on one square block of property just a block from the downtown area. The peaceful town gives one an opportunity to focus on the important things we face as women. Here one can receive drug and alcohol treatment, in-house NA and AA counseling, employ-

ment training, employment opportunities, parenting classes, visitation with one's children and spouses, transportation to appointments and meetings, interaction with the community and even opportunity to engage in an accredited Bible College program. This program will allow one to transfer their earned credits from this Bible program to other participating Bible Colleges.

While in this one year program, one will be able to participate in an arts/music program, learn skills such as sewing, alterations, cooking, culinary skills, woodworking, mid to advanced computer skills, business planning and creation, basic household repairs, home ownership, leadership and more. Volunteerism is encouraged in our program and runs greatly through the resources of our volunteers. We will regularly assist others in need of a helping hand.

Upon graduation from this program, one will be better equipped to meet the challenges of reentry. If you follow our program you should have accumulated financial resources to enable you to have your first and last month's rent for your new home, utility deposits, an emergency fund, food money and money for some basic household items. You will have a job, a Church, as well as go to contacts in your community whether you return to your previous home or a new community, and means to properly take care of yourself and your children.

After graduation, the Gettin' Home also offers an occasional call to see how you are as well as a regularly scheduled reunion. At the reunion you are able to visit the campus, gather with those who attended the program with you, and encourage those currently going through the program.

As a working Campus, all who attend the program will be involved with the function of the Campus in some way. This helps keep our costs down and helps us offer more for you. We do not want to turn anyone away because of their inability to pay.

Applications for the Gettin' Home, LLC may be obtained through your Caseworker, Chaplain or the Administrative office at your current facility. We encourage you to send us your application up to one year in advance and preferably no later than 6 months before your expected release date.

We look forward to hearing from you.



,Fran

Chaplain/Administrator

Gettin' Home, LLC

PO Box 175

Helena, OK 73741

